

WELCOME TO MAYFIELD AND GRAVES COUNTY!

Mayfield-Graves County is located in beautiful western Kentucky, right off Interstate 69. We are within 30 miles of Kentucky Lake to the east, the Ohio River to the north, and the Mississippi River to the west. Here we value our rich history while still maintaining a strong commitment to future growth.

Mayfield is a friendly community where we support our neighbors and our many locally owned small businesses. There's always something going on that appeals to all ages, whether it's outdoor sports and recreation, visual and dramatic arts, or even living history.

Come to Mayfield and Graves County and see it for yourself! We can't wait to welcome you!



MUST STAY

The Lodge at Emerald Waters

371 Straight Church Road
Mayfield, KY 42066
270-376-5555

www.emeraldwaterlodge.com

Southern Comfort Suites

2376 Highway 45 North
Mayfield, KY 42066
270-247-0030

www.southerncomfordsuites.net

Super 8 By Wyndham

1100 Links Lane
Mayfield, KY 42066
270-247-8899
1-855-516-1090

Wingfield Inn

1101 West Housman Street
Mayfield, KY 42066
270-247-3700

www.wingfieldinnky.com



Mayfield-Graves County Tourism Commission

Ice House, 120 North 8th Street

P.O. Box 111

Mayfield, KY 42066

270-247-6106

info@visitmayfieldgraves.org

www.visitmayfieldgraves.org



Printed in cooperation with the KY Department of Tourism.

VISIT MAYFIELD & GRAVES COUNTY



MAYFIELD
GRAVES
TOURISM

MUST SEE

Wooldridge Monuments: In a plot of Maplewood Cemetery are the unusual stone figures of an eccentric aristocrat and Civil War soldier, tagged as, "The Strange Procession That Never Moves". These figures were built from 1892 until Henry Wooldridge's death in 1899; Wooldridge, his family, friends, and favorite animals are enshrined here (611 North 5th Street, gates open 8:00 a.m. to 6:00 p.m., daily).



Cartwright Grove: Cartwright Grove is the re-creation of a tiny town known by locals as Cartwright Farm, which was a gift to the community from the late Earl and Lucille Wright. Those buildings are long gone but a community effort arose to build a similar 1800's

western town, located in the Mayfield-Graves County Fairgrounds (Highway 121 North). Themed open houses are held the last two weekends in October and on weekends in December.

Fancy Farm Vineyard & Winery:

Nestled in the small Graves County community of Fancy Farm, you will find a vineyard established by a local fourth-generation agricultural innovator. Make sure to visit the winery (115 Hayden Street) where you can enjoy a variety of wines in a welcoming atmosphere (270-623-8787).



MUST ATTEND

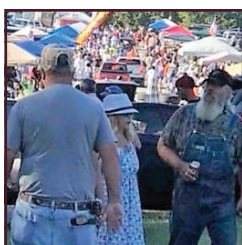
Fancy Farm Picnic: The Guinness Book of World Records called this, "The World's Largest Picnic". Held on the first Saturday in August, the "Picnic" is the kick-off political event for the state of Kentucky and includes stump speeches by local, state, and federal officials, barbeque with all the fixings, and games for all ages (www.fancyfarm.net).



Gourd Patch Festival: The first Saturday in October, Mayfield pays homage to the humble gourd with a gourd art show in the gallery, gourd vendors, artists and crafters, entertainment, concessions, and even a gourd car race. This event draws families from around

Kentucky and surrounding states and is a favorite with the locals (www.icehousearts.org).

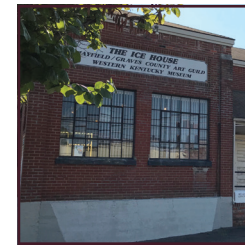
Haunted Graves: Mayfield & Graves County is the 'Place to Be' in October. This month-long festival includes a lighted Halloween Parade, a 5K race, a bike race, live music at a haunted old west town, a cruise-in, a horror film festival, a mini-pumpkin hunt, costume & pumpkin decorating contests, multiple trick-or-treat opportunities, the A-Maize-ing Farm Corn Maze, and two haunted house experiences (Industrial Slaughterhouse and Talon Falls). Visit the tourism website to see the full calendar of events (<https://www.visitmayfieldgraves.org/haunted-graves>).



Trade Days: This is the region's premiere flea market, hosting 60 to 90 vendors, held every Monday, year round, at the Mayfield-Graves County Fairgrounds (Highway 121 North). Trade Days originally began as "Mule Days" in the 1800's, when locals came to trade mules and equipment. Today, you'll find a little bit of everything and some great bargains! (270-376-2468)

MUST EXPERIENCE

Ice House Gallery, Gift Shop and Museum: Located in Mayfield's historic Ice House (120 North 8th St), the Ice House Gallery exhibits original works from local and regional artists, hosting eight shows throughout the year. The Gallery also offers art classes and is home to a gift shop where you can purchase handcrafted items by art guild members (www.icehousearts.org). On the right side of the Ice House is the Barton-Davis Museum, where you will find locally curated exhibits featuring all things Mayfield & Graves County.



Purchase Players: The Purchase Players Community Performing Arts Center was established more than 40 years ago. The current theater (302 West Water Street) was opened in 2002 and includes annual season performances by children, teens, and adults (www.purchaseplayers.com or 270-251-9035).

Outdoor Recreation: Mayfield & Graves County has many options for outdoor recreation, including 6 parks, a baseball complex, a soccer complex, a golf course, and an 8,265-acre national wildlife refuge. Kess Creek Park (201 Locust Street) includes a disc golf course, a fishing pond, a spray park, walking trails, picnic pavilions, and playground equipment.



Living History: Mayfield & Graves County is home to many sites listed on the National Register of Historic Places and is the only Kentucky county to host 2 Blue Star Memorials. There's also a 17-room mansion built in 1926 as a private home for Ed and Annie Gardner; "Edana Locus" was used as a public library for 32 years, and now serves as home to the chamber of commerce and economic development agency (201 East College Street).